

**RUSH  
WITT &  
WILSON**



**5 Highwood House Ellerslie Lane, Bexhill-On-Sea, East Sussex TN39 4LJ  
£249,500**

**A stunning two bedroom apartment forming part of a beautiful mansion style house near to the Highwoods Golf Course Bexhill, situated down a leafy lane, arranged over two floors the property is presented to an exceptional standard by the current owners, with electric central heating system, double glazed windows and doors, garage, off road parking, sun balcony, beautiful views over the Highwoods Golf Course, share of freehold, viewing comes highly recommended by RWW sole agents. Council Tax Band C.**



### **Communal Entrance Hallway**

Stunning communal entrance hallway with stairs to the first floor.

### **Private Entrance Hall**

With built in storage cupboard, entry-phone system, borrowed light through glass, window to the front elevation.

### **Living Room**

14'0" x 11'10" (4.27 x 3.62)

Windows to both the front and side elevation with beautiful views over the Highwood Golf Course, brick built open fireplace, double radiator.

### **Kitchen/Breakfast Room**

17'4" x 9'5" (5.30 x 2.89)

French doors lead out onto a private sun balcony with beautiful far reaching views, double radiator, modern fitted kitchen comprising a range of base and wall units with laminate wood block effect straight edge worktops, integrated oven and grill with induction hob, extractor canopy and light, plumbing for washing machine, space for fridge/freezer, single drainer stainless sink unit with mixer tap.

### **Private Sun Balcony**

15'2" x 12'9" (4.64 x 3.91)

With all weather proof flooring, glass and wrought iron railings, with stunning views.

### **Bathroom**

Panelled bath with hand-shower attachment and fixing, glass screen, pedestal mounted wash hand basin, chrome heated towel rail, obscured glass window to the side elevation, travertine ceramic wall tiling.

### **Cloakroom**

WC with low level flush, obscured glass window to the side elevation, travertine wall tiling.

### **Second Floor Landing**

#### **Bedroom One**

12'11" x 13'1" (3.96 x 4.00)

Window to the rear elevation with views over the playing fields, double radiator, built in wardrobe cupboard.

#### **Bedroom Two**

11'9" x 8'9" (3.60 x 2.68)

Window overlooks the front elevation with far reaching views over the golf course and adjoining countryside, double radiator, built in wardrobe cupboard.

#### **Garage**

To the rear of the property.

#### **Lease And Maintenance**

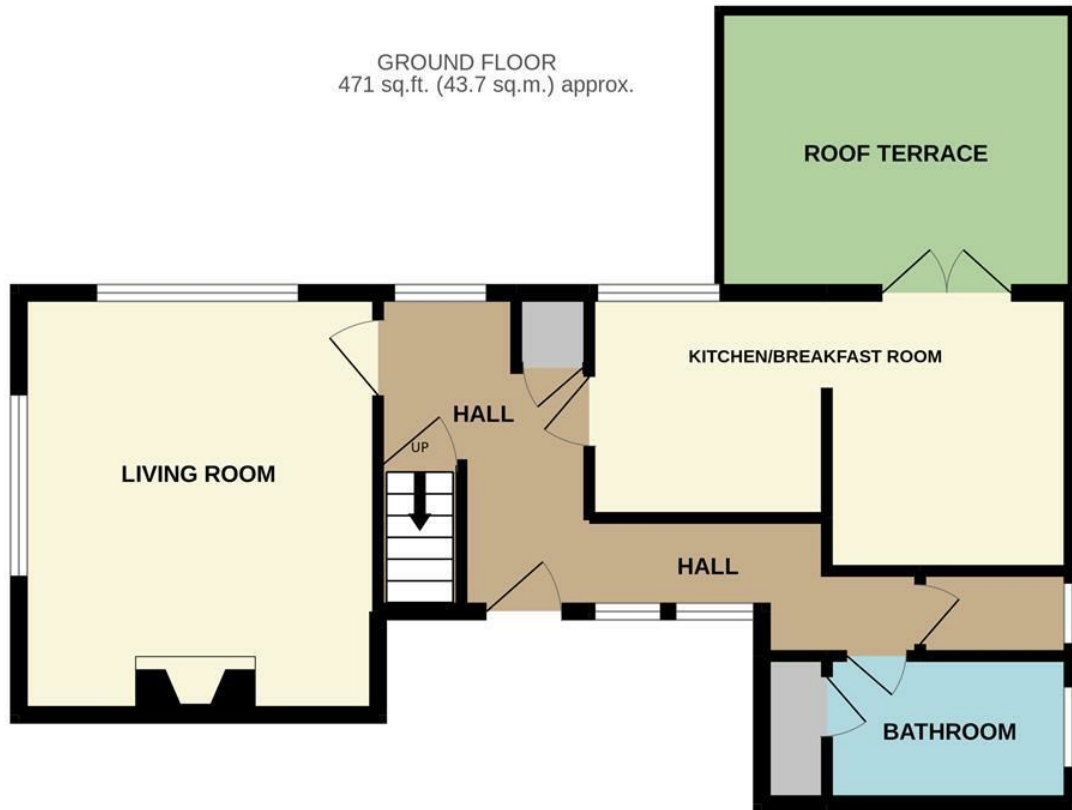
Share Of Freehold, 940 years remaining, service charge approximately £100 p/m

#### **Agents Note**

None of the services or appliances mentioned in these sale particulars have been tested. It should also be noted that measurements quoted are given for guidance only and are approximate and should not be relied upon for any other purpose.



GROUND FLOOR  
471 sq.ft. (43.7 sq.m.) approx.



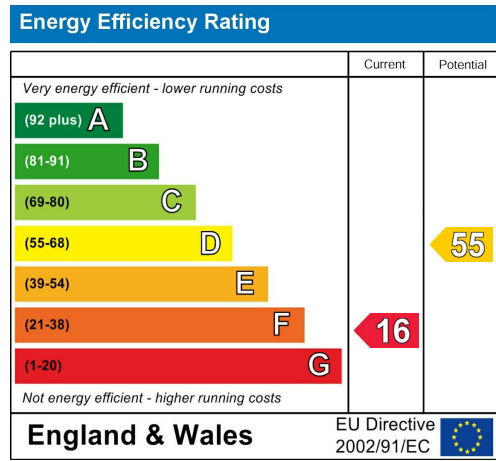
1ST FLOOR  
622 sq.ft. (57.8 sq.m.) approx.



TOTAL FLOOR AREA : 1093 sq.ft. (101.5 sq.m.) approx.

Whilst every attempt has been made to ensure the accuracy of the floorplan contained here, measurements of doors, windows, rooms and any other items are approximate and no responsibility is taken for any error, omission or mis-statement. This plan is for illustrative purposes only and should be used as such by any prospective purchaser. The services, systems and appliances shown have not been tested and no guarantee as to their operability or efficiency can be given.

Made with Metropix ©2022



**RUSH  
WITT &  
WILSON**

**Residential Estate Agents  
Lettings & Property Management**



**3 Devonshire Road  
Bexhill-on-Sea  
East Sussex  
TN40 1AH  
Tel: 01424 225588  
bexhill@rushwittwilson.co.uk  
www.rushwittwilson.co.uk**